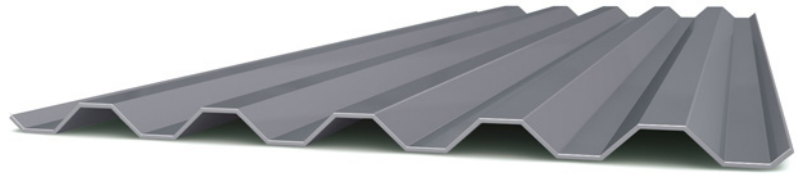
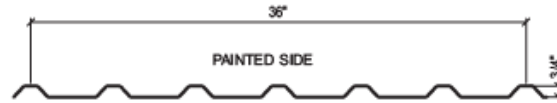


Profiled Aluminum M-36 Technical Data Sheet



M-36 Panel



Panel Dimensions

Coverage Width	36"
Rib Pitch	7.2"
Profile Depth	1.5"
Thickness	0.040"
Weight	0.62 lb/ft ²

Material Specifications

3000 Series Alloy in compliance with the Aluminum Association Composition Specifications and conforming to ASTM B209 is standard.

Product Notes

- Panels should always be lapped against prevailing winds.
- Store panels and flashings in a safe dry environment.
- Typical side lap spacing is 18". Consult a Professional Engineer for specific requirements, as this may not be appropriate for all applications.
- 1/8"x1/2" tape sealant shall be used at all side laps when used as a roof panel.
- Side lap fasteners are required. Typical spacing is 18"; however, this spacing may not be appropriate for all applications. Consult a Professional Engineer for specific requirements.
- Minimum recommended roof slope: 1:12.
- Reverse run available.
- Panel Length: Maximum - 45' Minimum - 6'.
- DO NOT USE NAILS FOR ANY PANEL ATTACHMENT.

General Information

Install panels plumb, level and straight so it is watertight and without waves or other distortions, allowing for thermal movement considerations. Apply sealant tape or caulking as necessary at flashing and panel joints to prevent water penetration. M-36 panels come with a 20 year paint finish warranty for cracking, chipping, peeling, fading, and chalking - providing confidence in a long-lasting application. To ensure the durability of PBU panels, use proper care. Remove filings, grease, stains, marks, or excess sealants from roof panels system to prevent staining.

Testing

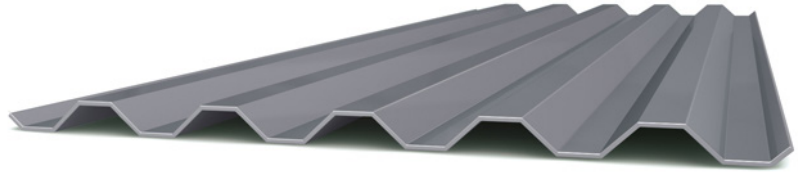
UL580 UL2218
UL790

ARCONIC ARCHITECTURAL PRODUCTS LLC

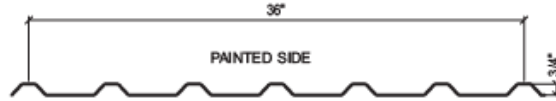
50 Industrial Boulevard
Eastman, GA 31023-4129
Tel. 800 841 7774
www.reynobond.com
EC 99603-012



Profiled Aluminum
M-36
Technical
Data Sheet



M-36 Panel



Gravity Load Table

Substrate	Span	2'-6"	3'-0"	3'-6"	4'-0"	4'-6"	5'-0"
.040" alum.	3	527	366	269	206	163	132

Product Installation

Install panels plumb, level and straight so it is watertight and without waves or other distortions, allowing for thermal movement considerations. Apply sealant tape or caulking as necessary at flashing and panel joints to prevent water penetration.

Product Maintenance and Warranty

M-36 panels provides a 20 year paint-finish warranty for cracking, chipping, peeling, fading and chaulking - providing confidence in a long-lasting application.

To ensure the durability of your panels, use proper care. Remove filings, grease, stains, marks or excess sealants from roof panels system to prevent staining. Store panels and flashing in a safe, dry environment.

Disclaimer:

Laws and building and safety codes governing the design and use of AAP's products, and specifically aluminum composite materials, vary widely. It is the responsibility of the Laws and building and safety codes governing the design and use of AAP's products, and specifically aluminum materials, vary widely. It is the responsibility of the owner, the architect, the general contractor, the installer and the fabricator/transformer, consistent with their roles, to determine the appropriate materials for a project in strict conformity to all applicable national, regional and local building codes and regulations.

ARCONIC ARCHITECTURAL PRODUCTS LLC

50 Industrial Boulevard
Eastman, GA 31023-4129
Tel. 800 841 7774
www.reynobond.com
EC 99603-012

